



LC1208

200mA Low Consumption Linear Regulator

DESCRIPTION

LC1208 series is a group of positive voltage output, low power consumption, low dropout voltage, three terminal regulator. It can provide 200mA output current when input / output voltage differential drops to 430mV ($V_{out} = 2.8V$), The very low power consumption of LC1208 ($I_q=1.0\mu A$) can greatly improve natural life of batteries.

LC1208 can provide output value in the range of 1.1V~5.5V in 0.1V steps. It also can be customized on command.

LC1208 includes high accuracy voltage reference, error amplifier, current limit circuit and output driver module.

LC1208 has well load transient response and good temperature characteristic, And it uses trimming technique to guarantee output voltage accuracy within $\pm 2\%$.

ORDERING INFORMATION

LC1208 [1](#) [2](#) [3](#) [4](#) [5](#)

Code	Description
1	Temperature&Rohs: C:-40~85°C ,Pb Free Rohs Std.
2	Package type: B3:SOT-23-3 B3A:TSOT-23 B5:SOT-23-5 C3:SOT-89-3 H:TO-92
3	Packing type: TR:Tape&Reel (Standard) BG:Bag (TO-92)
4	Output voltage: e.g. 11=1.1V 15=1.5V 55=5.5V
5	Voltage accuracy: 1= $\pm 1\%$ Blank(default)= $\pm 2\%$

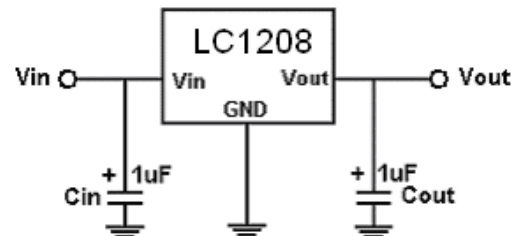
FEATURES

- Low Power Consumption:1.0uA (Typ.)
- Maximum Output Current:200mA
- Small Dropout Voltage
- 210mV@100mA ($V_{out}=2.8V$)
- 430mV@200mA ($V_{out}=2.8V$)
- Input Voltage Range:1.5V~6V
- Output Voltage Range:1.1V~5.5V (customized on command in 0.1V steps)
- Highly Accurate: $\pm 2\%$ ($\pm 1\%$ customized)
- Output Current Limit

APPLICATIONS

- Battery Powered equipment
- Power Management of MP3、PDA、DSC、Mouse、PS2 Games
- Reference Voltage Source Regulation after Switching Power

TYPICAL APPLICATION



Note: Input capacitor ($C_{in}=1\mu F$) and Output capacitor ($C_{out}=1\mu F$) are recommended in all application circuit. Ceramic capacitor is recommended.

PIN CONFIGURATION

